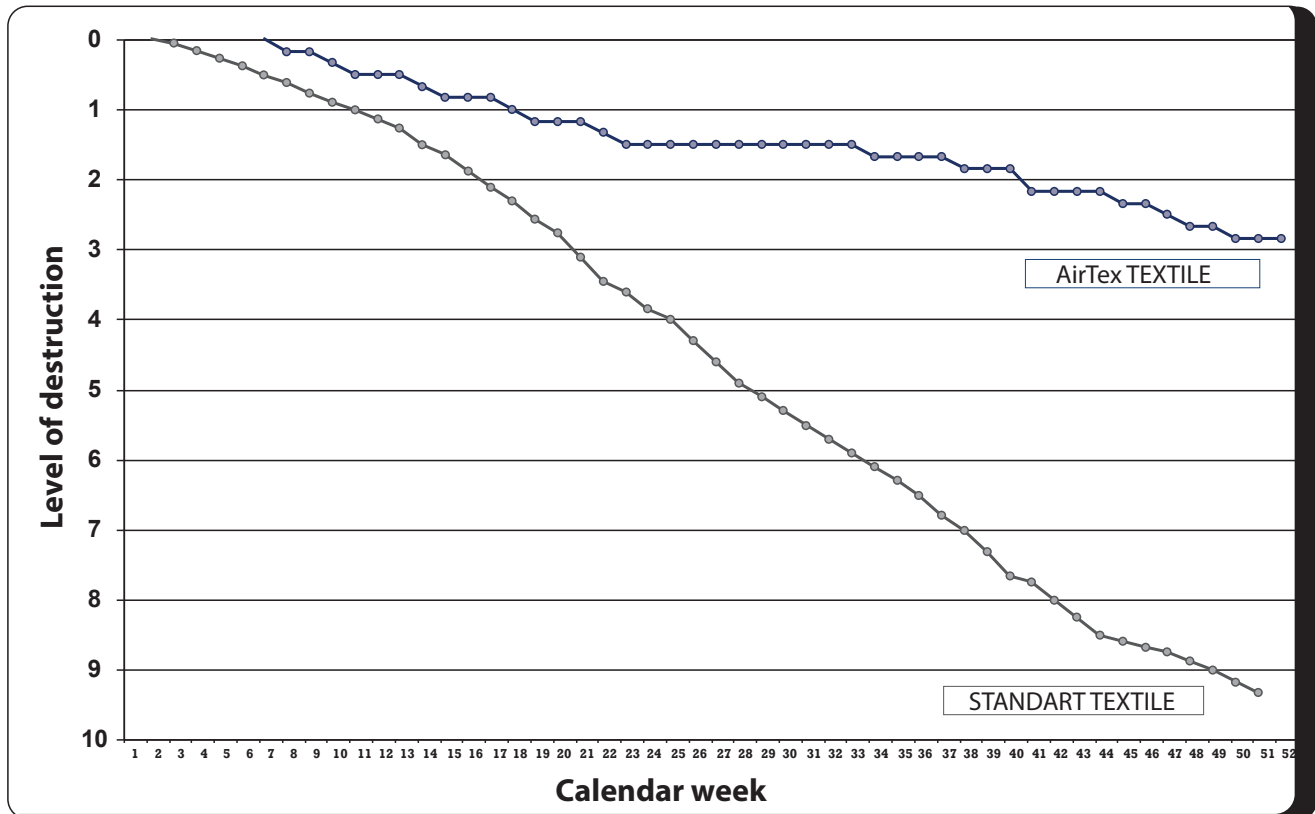


Durability diagram

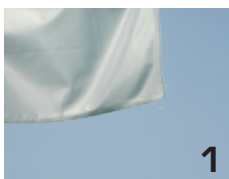
observation period: 52 Weeks

The basis of these results is a Ø-wind speed of 19 km/h over the whole calendar year and the lowering of the flag at wnd speeds over 7 (approx. 60 km/h)



A guarantee for the durability of flag materials CANNOT be given due to the differing weather conditions at every location. They serve as the guide for the selection for individual flag qualities. These empirical results, collected over approx. 10 years, show real values obtained at 4 test sites on Pass Thurn.

An overview of the levels of destruction



1
Stiches begin to come undone a bit.



2
Seams begin to tear 1-2 cm in length.



3
Damage along the seam extends to 3-5 cm to length.



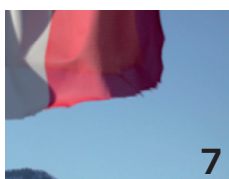
4
The first bits of damage appear on the flag itself.



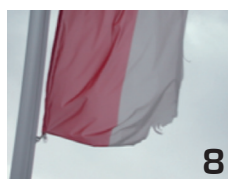
5
The flag itself begins to tear. Chain stitches are open along almost the whole bottom edge.



6
The first significant damage appears on the outer edge (seam and material).



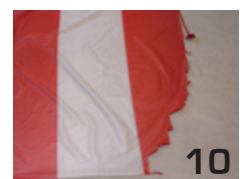
7
The right bottom corner begins to clearly become rounded.



8
The material begins to tear in stripes or wears more and more.



9
More than 10% of the width of the flag has already been torn away at the corner.



10
The Flag is highly destroyed.

FLAGS & MORE LTD

order@flagsandmore.co.uk

+44 7462 826167

www.flagsandmore.co.uk